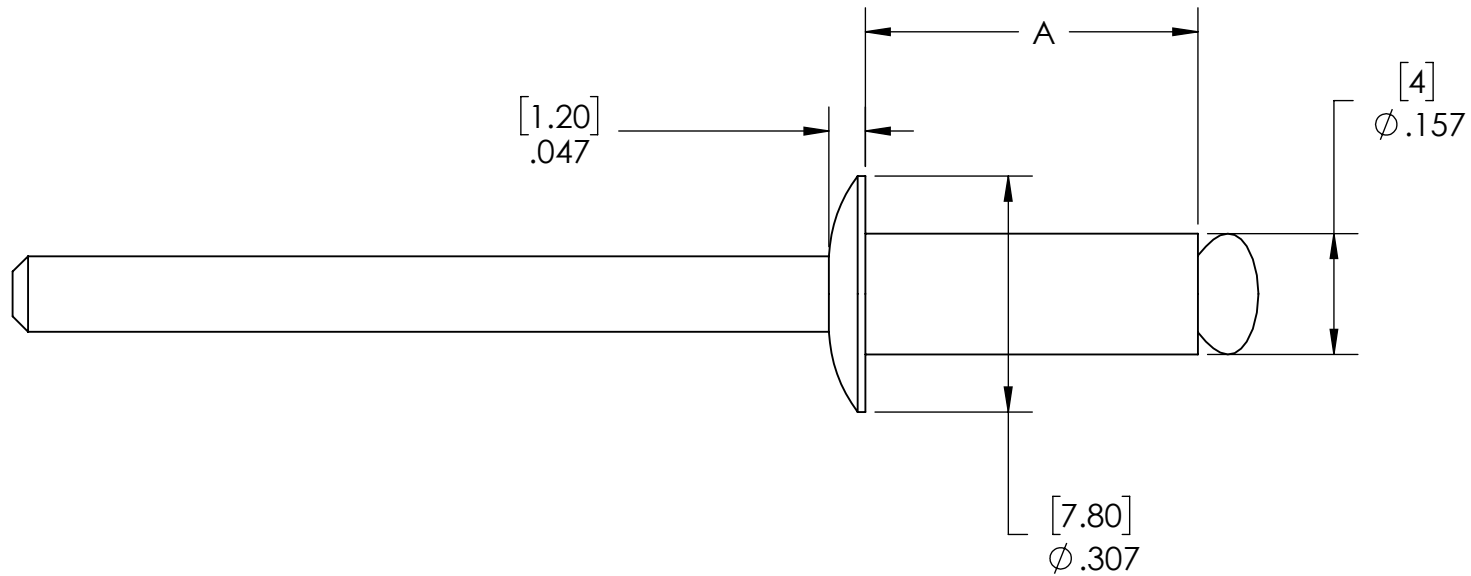
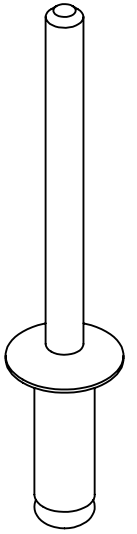


Part #	A	Grip Range
WCP-0445	~ 0.32	.03" - .125"
WCP-0446	~ 0.35	.125" - .188"
WCP-0447	~ 0.43	.159" - .250"

Specifications:

- Shear Strength - 220 lbs
- Tensile Strength - 350 lbs

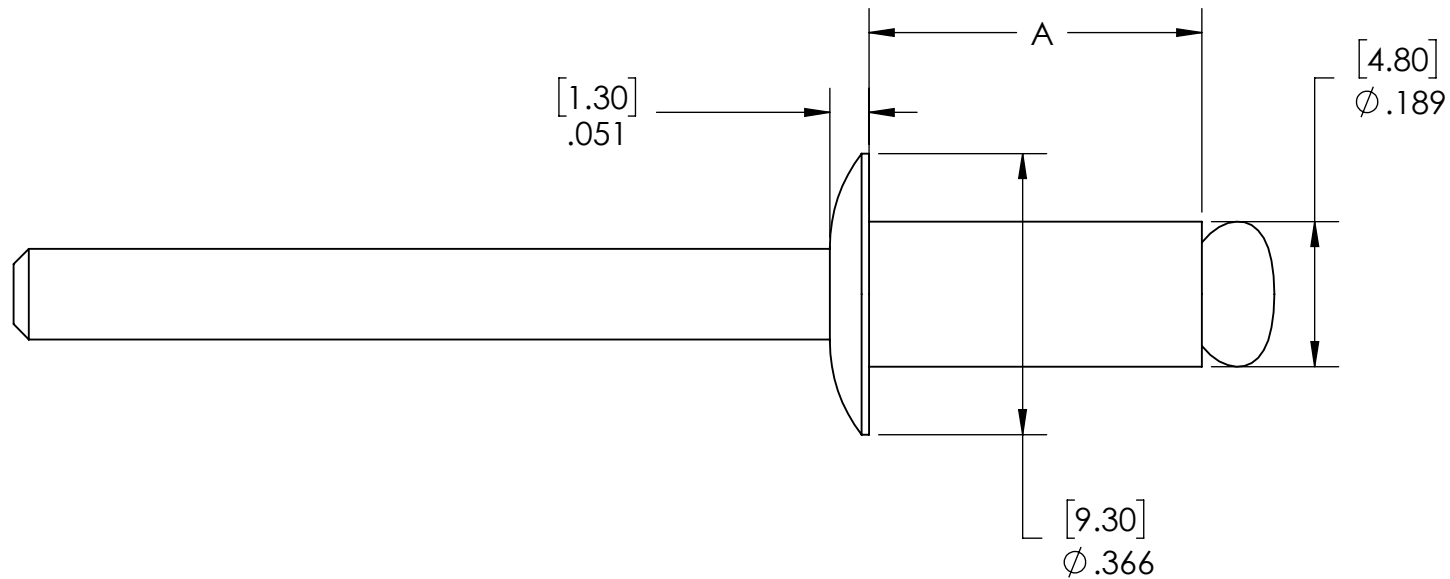
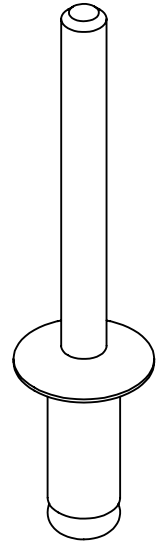


Description		Blind Rivet (5/32")	
Dwg No		Web-WCP Rivets	
Project		FIRST Robotics - FRC	Sheet 1 of 1
Release		8/12/2021	ALL DIMENSIONS ARE IN INCHES [MM].

Part #	A	Grip Range
WCP-0448	~ 0.32	.09" - .159"
WCP-0449	~ 0.47	.125" - .250"
WCP-0450	~ 0.59	.250" - .438"
WCP-0451	~ 0.71	.375" - .500"

Specifications:

- Shear Strength - 310 lbs
- Tensile Strength - 500 lbs

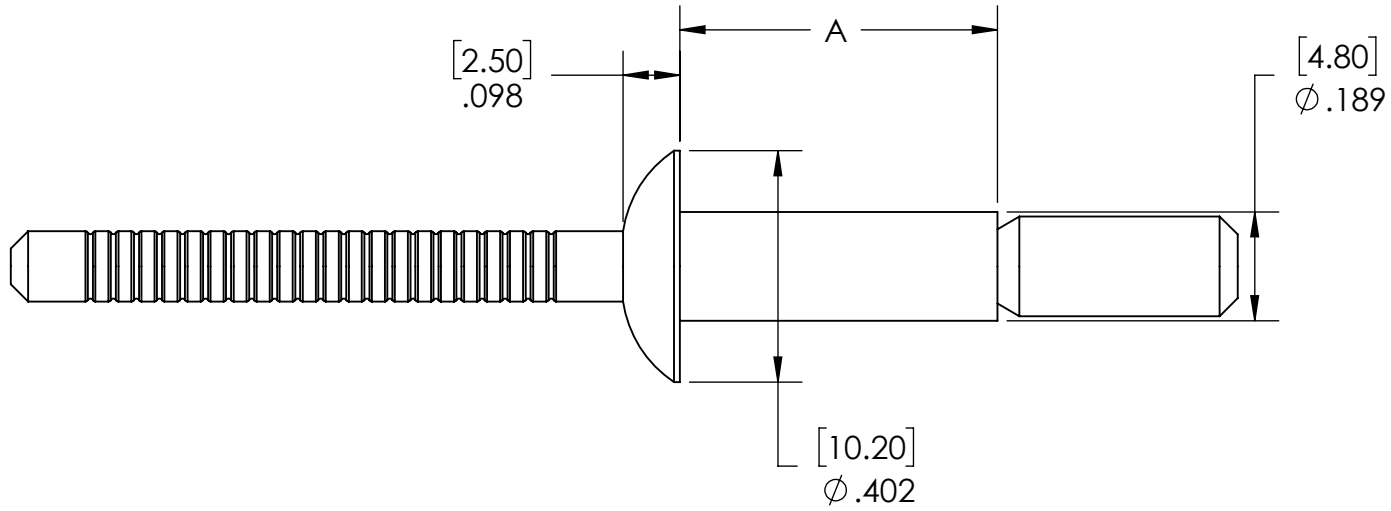
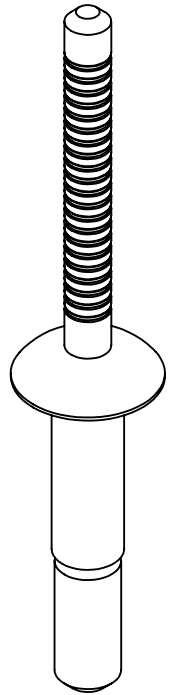


Description		Blind Rivet (3/16")	
Dwg No		Web-WCP Rivets	
Project		FIRST Robotics - FRC	Sheet 1 of 1
Release	8/12/2021	ALL DIMENSIONS ARE IN INCHES [MM].	

Part #	A	Grip Range
WCP-0452	~ 0.55	.188" - .438"

Specifications:

- Shear Strength - 750 lbs
- Tensile Strength - 600 lbs



Description	High Strength Blind Rivet (3/16")	
Dwg No	Web-WCP Rivets	
Project	FIRST Robotics - FRC	Sheet 1 of 1
Release	8/12/2021	ALL DIMENSIONS ARE IN INCHES [MM].