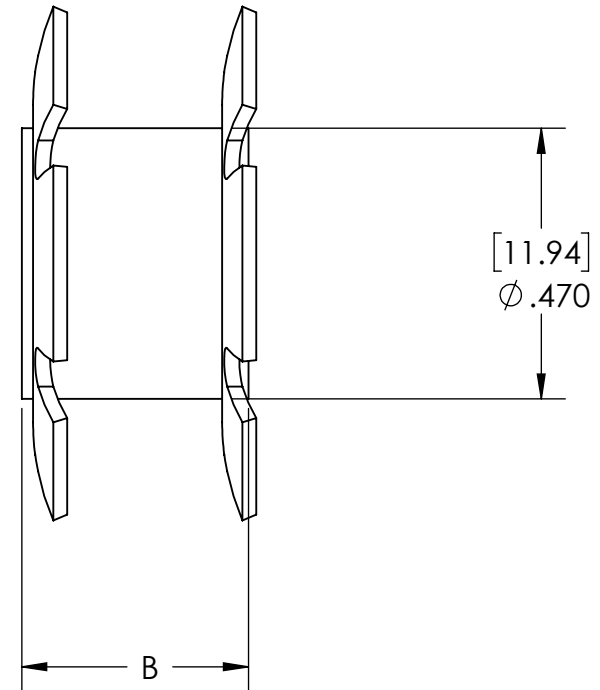
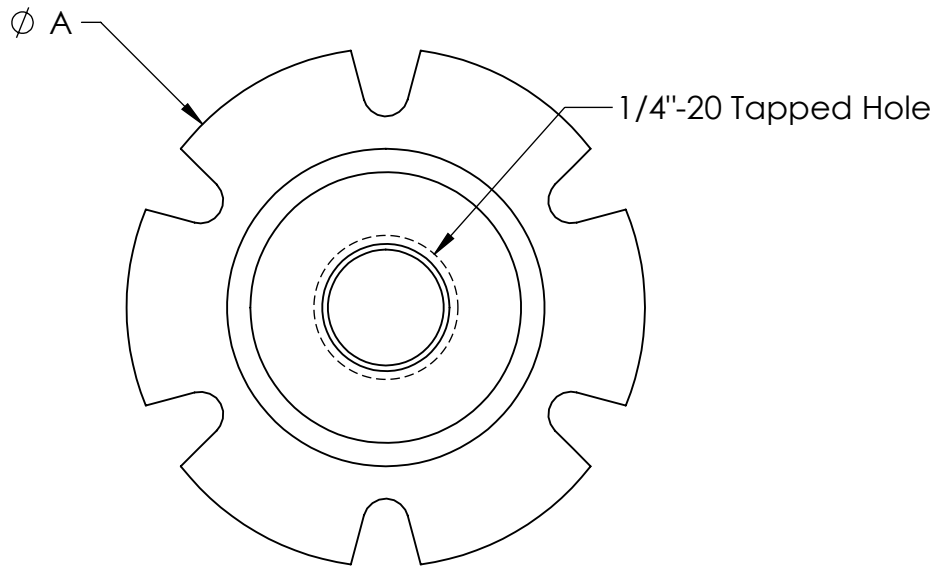
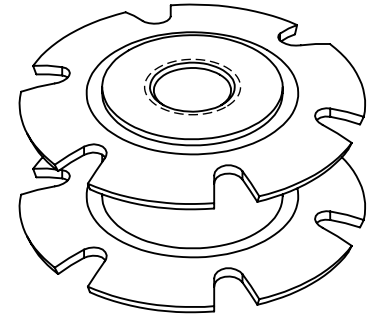


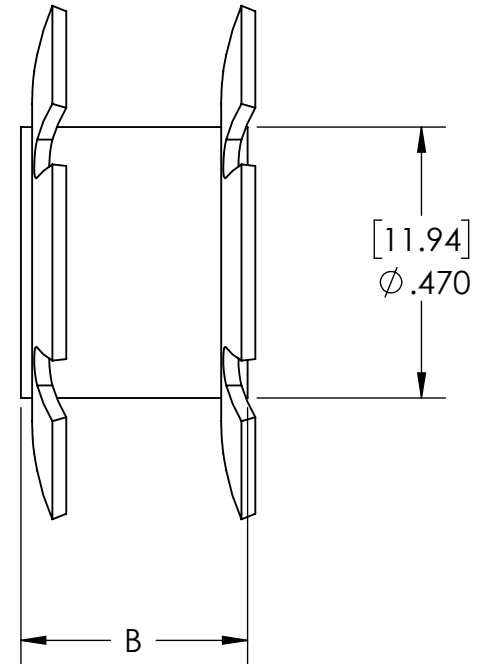
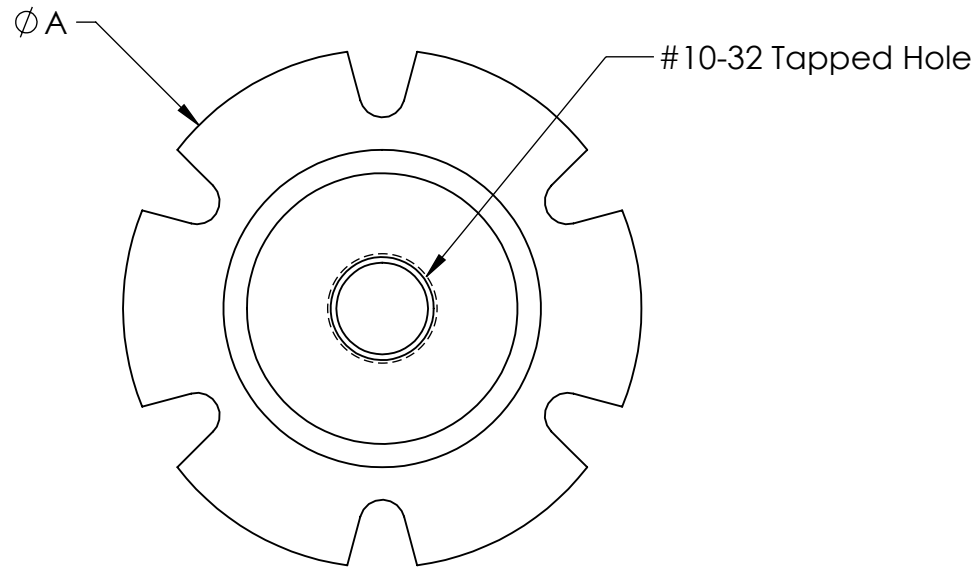
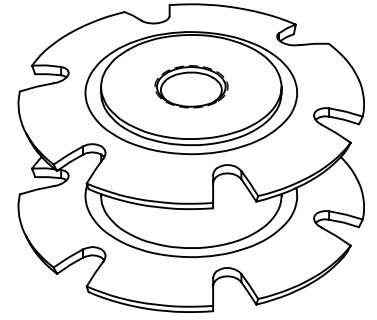
Part #	A	B	Tube ID
WCP-0428	.650	.394	.625
WCP-0429	.820	.394	.750
WCP-0430	.900	.394	.875
WCP-0431	1.180	.394	1.125



Description Tube Connecting Nuts (1/4"-20 Bore)		
Dwg No Web-Tube Connecting Nuts		
Project FIRST Robotics - FRC	Sheet 1 of 1	
Release 12/5/2023	ALL DIMENSIONS ARE IN INCHES [MM].	

WWW.WCPRODUCTS.COM

Part #	A	B	Tube ID
WCP-1187	.650	.394	.625
WCP-1188	.820	.394	.750
WCP-1189	.900	.394	.875
WCP-1190	1.180	.394	1.125



Description Tube Connecting Nuts (#10-32 Bore)		
Dwg No Web-Tube Connecting Nuts		
Project FIRST Robotics - FRC	Sheet 1 of 1	
Release 12/5/2023	ALL DIMENSIONS ARE IN INCHES [MM].	

WWW.WCPRODUCTS.COM