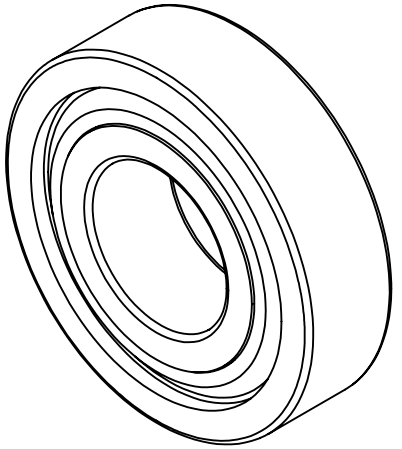
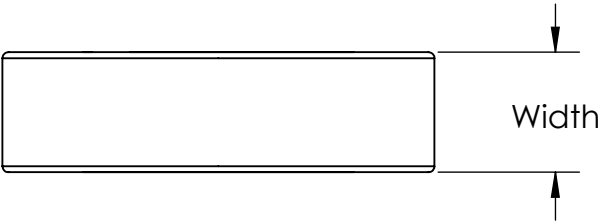
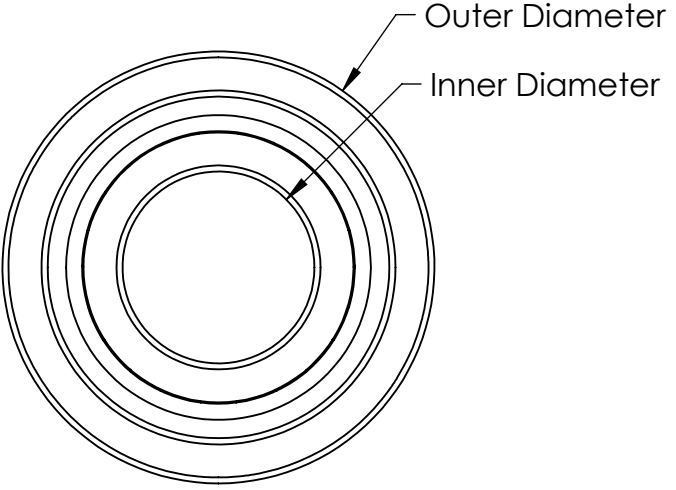


Part #	Inner Diameter	Outer Diameter	Width
WCP-0773	0.188	0.500	0.196
WCP-0498	0.236	0.472	0.157
WCP-0774	0.250	0.375	0.125
WCP-0775	0.250	0.500	0.188
WCP-0041	0.250	0.625	0.196
WCP-0212	0.250	0.750	0.282
WCP-0776	0.375	0.875	0.281
WCP-0777	0.500	0.875	0.281
WCP-0778	0.500	1.125	0.313
217-4270	0.541	1.125	0.313
WCP-0078	0.591	0.945	0.196
WCP-0840	0.591	1.102	0.276
WCP-0841	0.669	1.024	0.197
WCP-0027	0.984	1.457	0.276
WCP-1471	1.378	1.850	0.276
WCP-1503	2.500	3.000	0.250
WCP-1111	2.500	3.125	0.313
WCP-0357	3.000	3.500	0.250
WCP-0887	3.000	3.500	0.250
WCP-0036	3.150	3.937	0.394
WCP-0037	3.500	4.000	0.250
WCP-0896	3.500	4.000	0.250



Note: WCP-0887 and WCP-0896 are both sealed bearings.

	Description		WCP Radial Bearings
	Dwg No		Radial Bearings
	Project	FIRST Robotics - FRC	Sheet 1 of 1
	Release	12/21/2023	<b>ALL DIMENSIONS ARE IN INCHES [MM].</b>

[WWW.WCPRODUCTS.COM](http://WWW.WCPRODUCTS.COM)