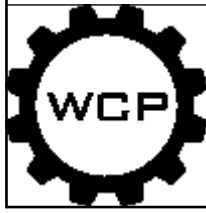
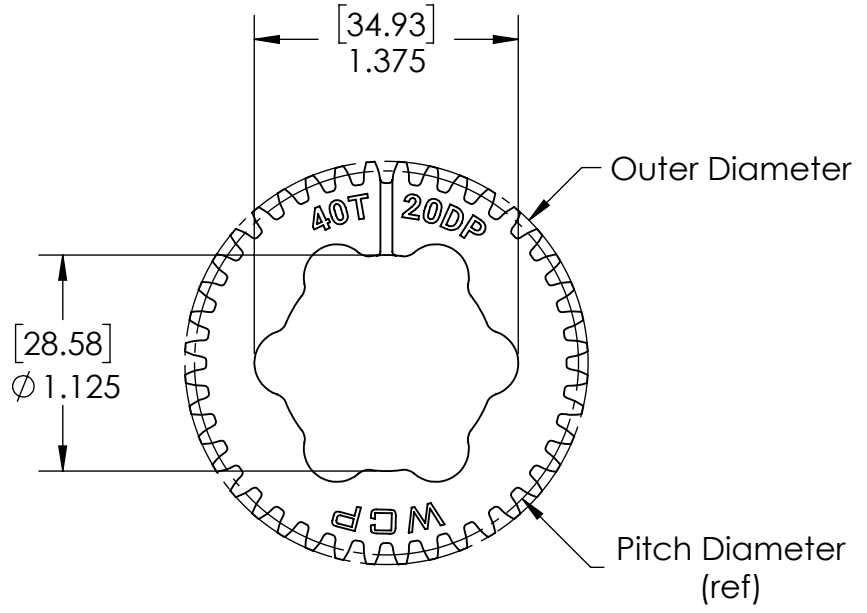
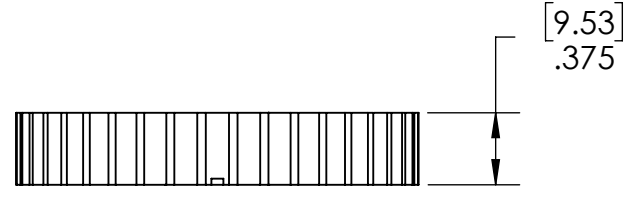


Part #	Tooth Count	Pfitch Diameter (ref)	Outer Diameter	Material
WCP-1191	34	1.700"	1.800"	7075-T6 Aluminum
WCP-1192	36	1.800"	1.900"	7075-T6 Aluminum
WCP-1193	38	1.900"	2.000"	7075-T6 Aluminum
WCP-1194	40	2.000"	2.100"	7075-T6 Aluminum
WCP-1195	42	2.100"	2.200"	7075-T6 Aluminum
WCP-1196	44	2.200"	2.300"	7075-T6 Aluminum
WCP-1197	46	2.300"	2.400"	7075-T6 Aluminum
WCP-1198	48	2.400"	2.500"	7075-T6 Aluminum
WCP-1199	50	2.500"	2.600"	7075-T6 Aluminum
WCP-1200	52	2.600"	2.700"	7075-T6 Aluminum
WCP-1201	54	2.700"	2.800"	7075-T6 Aluminum
WCP-1202	56	2.800"	2.900"	7075-T6 Aluminum
WCP-1203	58	2.900"	3.000"	7075-T6 Aluminum
WCP-1204	60	3.000"	3.100"	7075-T6 Aluminum
WCP-1205	62	3.100"	3.200"	7075-T6 Aluminum
WCP-1206	64	3.200"	3.300"	7075-T6 Aluminum
WCP-1207	66	3.300"	3.400"	7075-T6 Aluminum
WCP-1208	68	3.400"	3.500"	7075-T6 Aluminum
WCP-1209	70	3.500"	3.600"	7075-T6 Aluminum
WCP-1210	72	3.600"	3.700"	7075-T6 Aluminum
WCP-1211	74	3.700"	3.800"	7075-T6 Aluminum
WCP-1212	76	3.800"	3.900"	7075-T6 Aluminum
WCP-1213	78	3.900"	4.000"	7075-T6 Aluminum
WCP-1214	80	4.000"	4.100"	7075-T6 Aluminum
WCP-1215	82	4.100"	4.200"	7075-T6 Aluminum
WCP-1216	84	4.200"	4.300"	7075-T6 Aluminum



Description		Aluminum SplineXL Gears	
Dwg No		Web-Aluminum SplineXL Gears	
Project		FIRST Robotics - FRC	Sheet 1 of 1
Release		1/4/2024	<b>ALL DIMENSIONS ARE IN INCHES [MM].</b>

[WWW.WCPRODUCTS.COM](http://WWW.WCPRODUCTS.COM)